

**CERTIFIED LAND CORNER RECORDATION**

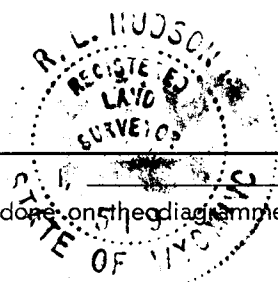
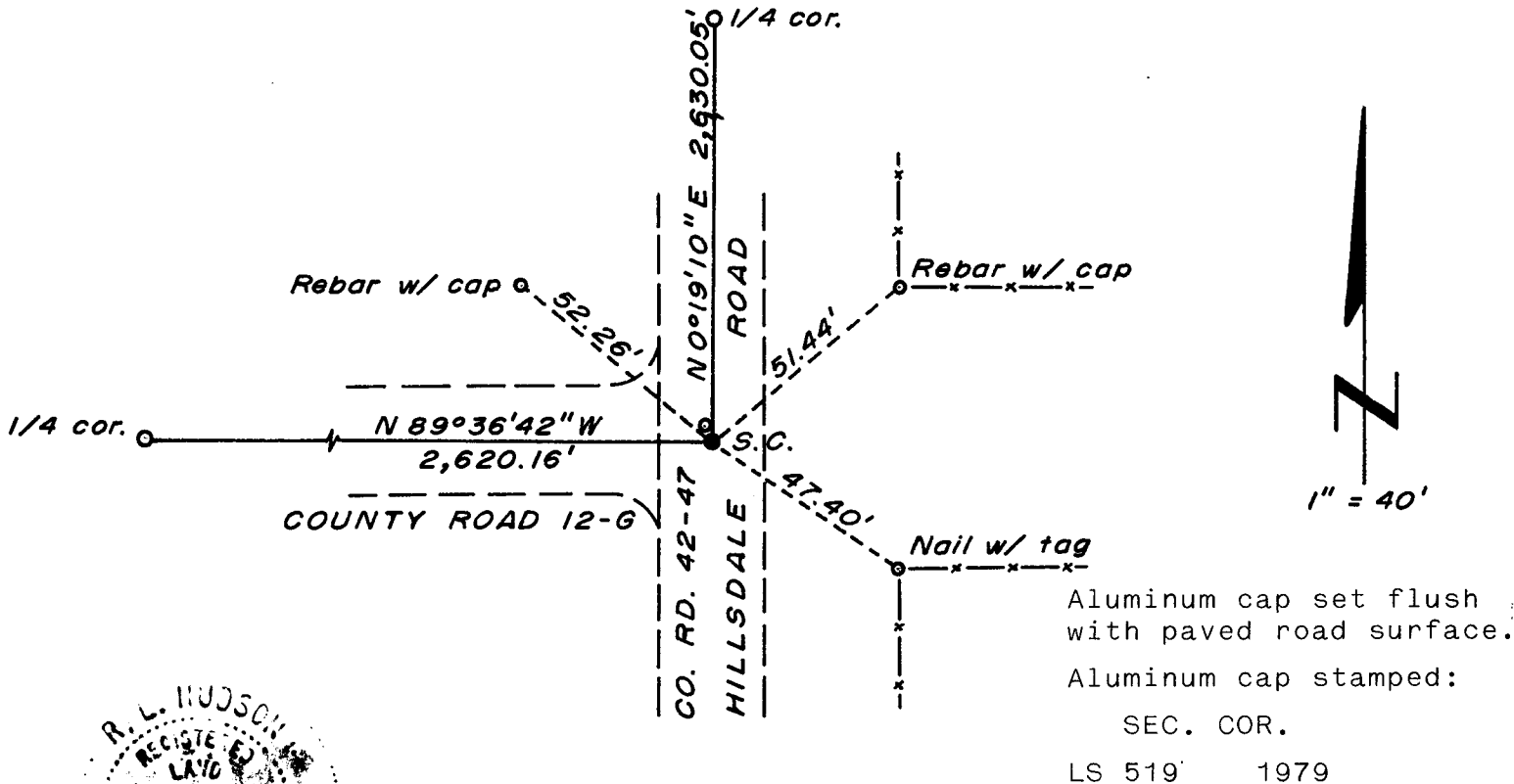
DESCRIPTION OF CORNER EVIDENCE FOUND, AND ORIGINAL RECORD (If known)

LOCATION Found an old railroad spike (top portion sheared-off) below overlay surface of paved road.  
 S.13 S.18  
 S.24 S.19 A 1" dia. rebar, set by Wyoming L.S. 427 in 1976, bears N 23°31' W, 3.12 feet distant.  
 T.14N.  
 R.64W. R.63W. G.L.O. record - Limestone, 16" x 12" x 5" - 1871.  
 6th P.M.

DESCRIPTION OF MONUMENT AND ACCESSORIES ESTABLISHED TO PERPETUATE THE ORIGINAL LOCATION OF THIS CORNER:

At the corner: Set a 5/8" dia. x 24" long rebar with 1 1/2" dia. aluminum cap.  
 Accessories: A 1/2" dia. rebar w/ plastic cap: N 50°51'40" W, 52.26' distant.  
 (found, set by L.S. 427) A 1/2" dia. rebar w/ plastic cap: N 50°36'30" W, 51.44' distant.  
 A nail w/ plastic tag (in post): S 55°45'15" E, 47.40' distant.

SKETCH, WITH COURSE AND DISTANCE TO ADJACENT CORNER IF DETERMINED IN THIS SURVEY.  
 (May Sketch or Paste Reproduction on Reverse Side.)



R.L. Hudson certify that I have carefully performed ~~or reviewed~~ the work done on the diagrammed corner as reported on this recordation form and approve the same.

R.L. Hudson Wyoming L.S. No. 519  
 Signature of Surveyor Registration No.

STATE OF WYOMING,  
 Office of Clerk and Recorder,  
 County of Taramore

534726

This "corner record" was filed for record on the 4 day of July, 1977, was noted on the cross-index plat and is assigned page No. \_\_\_\_\_, in book No. \_\_\_\_\_

Janet Whitehead  
 County Official

Cross Index No.	T. _____	R. _____	Mer.
	<u>N-1</u>	<u>14</u>	<u>63</u> Mer.
	<u>N-25</u>	<u>14</u>	<u>64</u> Mer.
	_____	_____	Mer.
	_____	_____	Mer.
	_____	_____	Mer.
	_____	_____	Mer.

N-25 14-64